

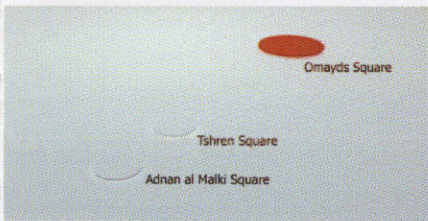


Architecture & Contemporary Art Center  
SUPERVISION OF DR.JAMAL AL AHMAR AND DR.HANAN ABOUD

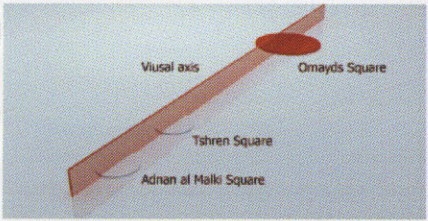
## Thanks For all ....

Special thanks for my family.....My Father Dr.Tarif Tinatwi & My mother Dr.Liela al Mala and my Grand mother Salma al Kimi.....Special thanks for my Architecture teachers Dr.Jamal al Ahmar And Dr.Hanan Abod ..... Special thanks for all my pervious teachers.... Special thanks to my best friend Maria Thala al Aswad .....Special thanks for my collage friends Hanna Krmoush & Ihab Hariri & Reem Harfoush & Samer al Shwaki & Ahmad Bearuti & Noura Shffa & Mohamed khaled bsma & Mohamad Dhni & Alaa Hedar ..... Special thanks for my friend Ayham kastantini & Haesam Al Saidhasan ...And Special thanks for all who helped me in this project.....

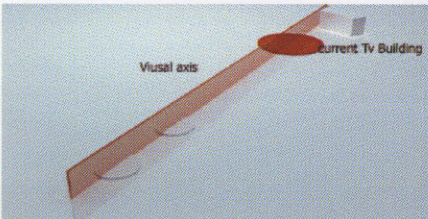
**Tv Building in the Site Plan**



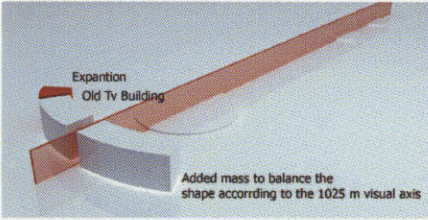
1



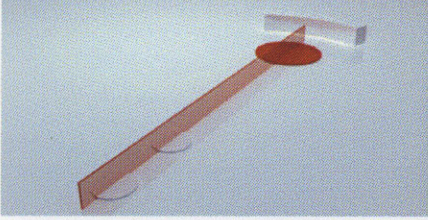
2



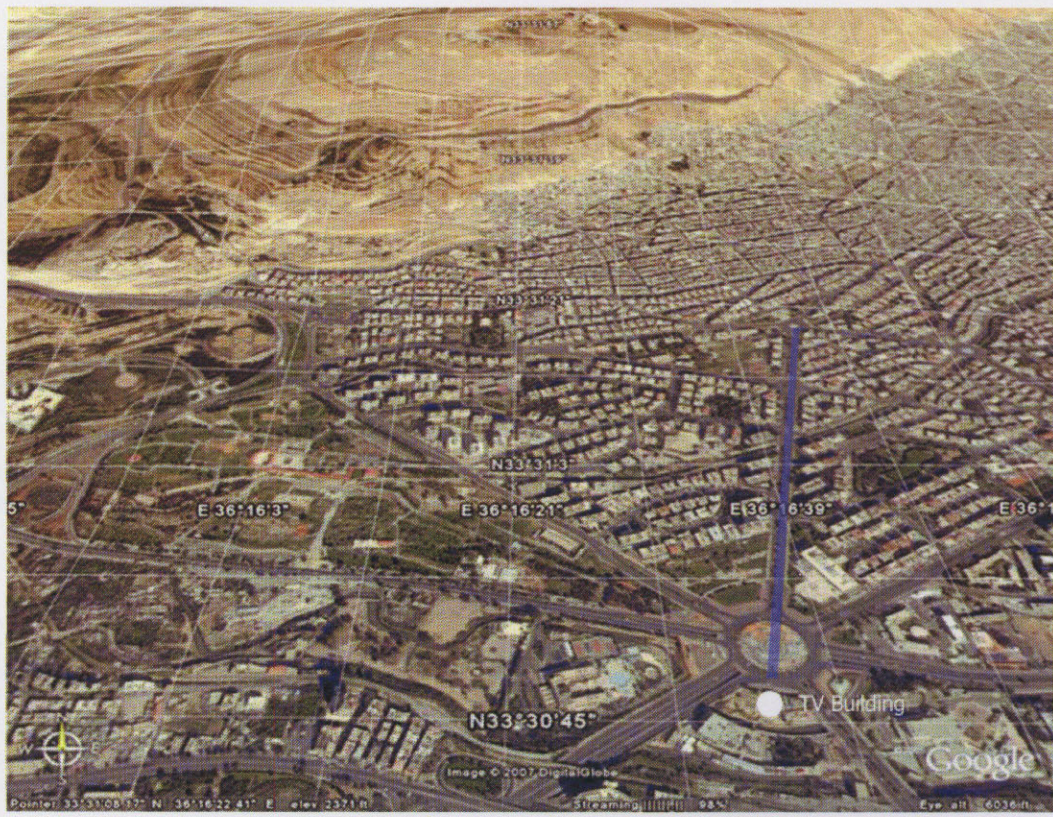
3



4



5



**Google Earth and satelite photo to Syrian tv building**

A visual Axis is extending from Adnan al maliki square to omaydes square - 1025 m distance - and its centric to project land , But the syrien tv building is not pivottal to this axis , and it is constructed on the right way of it ..So at the bigining we restudy this Visual axis and mass by its centric.

In the old study and near the syrian Tv building ,there is many other masses ,thier function is variable between tv functions and security points so we have refer to the masses we want to keep and the ones we want to remove,

**The Most Importnt Buildings In Omayades Square**

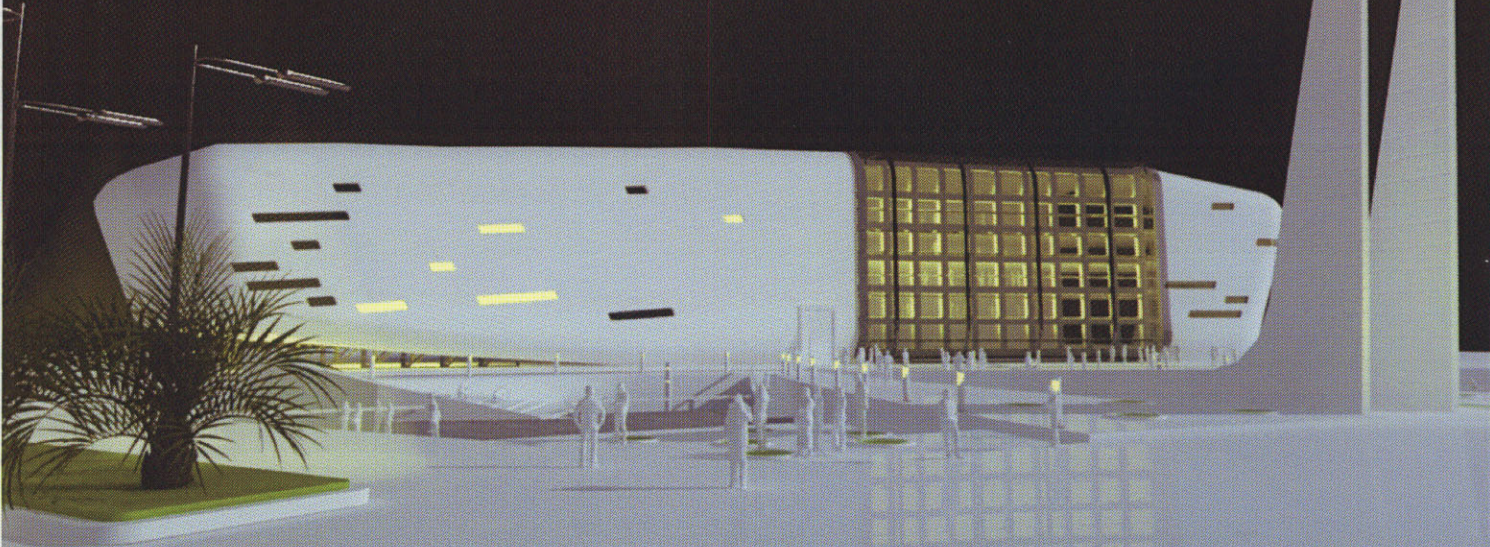


Al Asad Library

Al Asad Opera

Ministry Of High Education

Sheraton Hotel

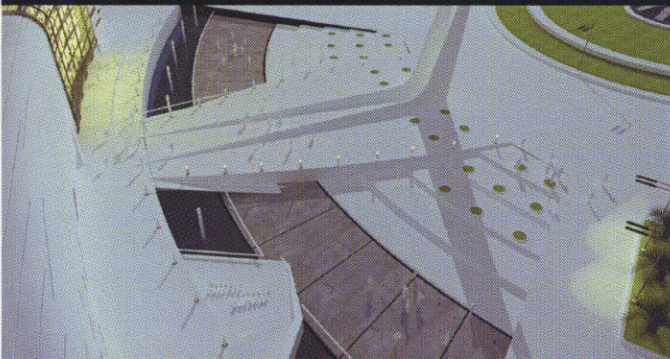
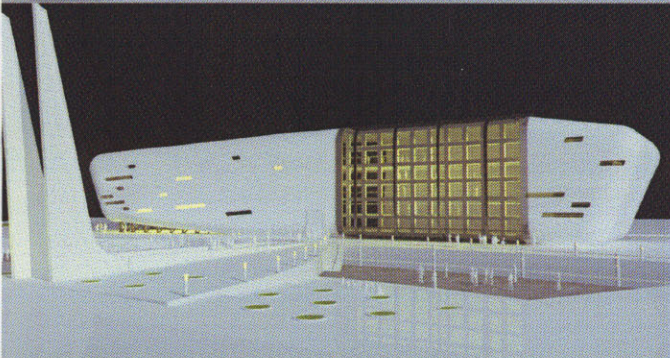


### 3D Views for Architecture & Contemporary Art Center Main Elevation and Entrance Yard

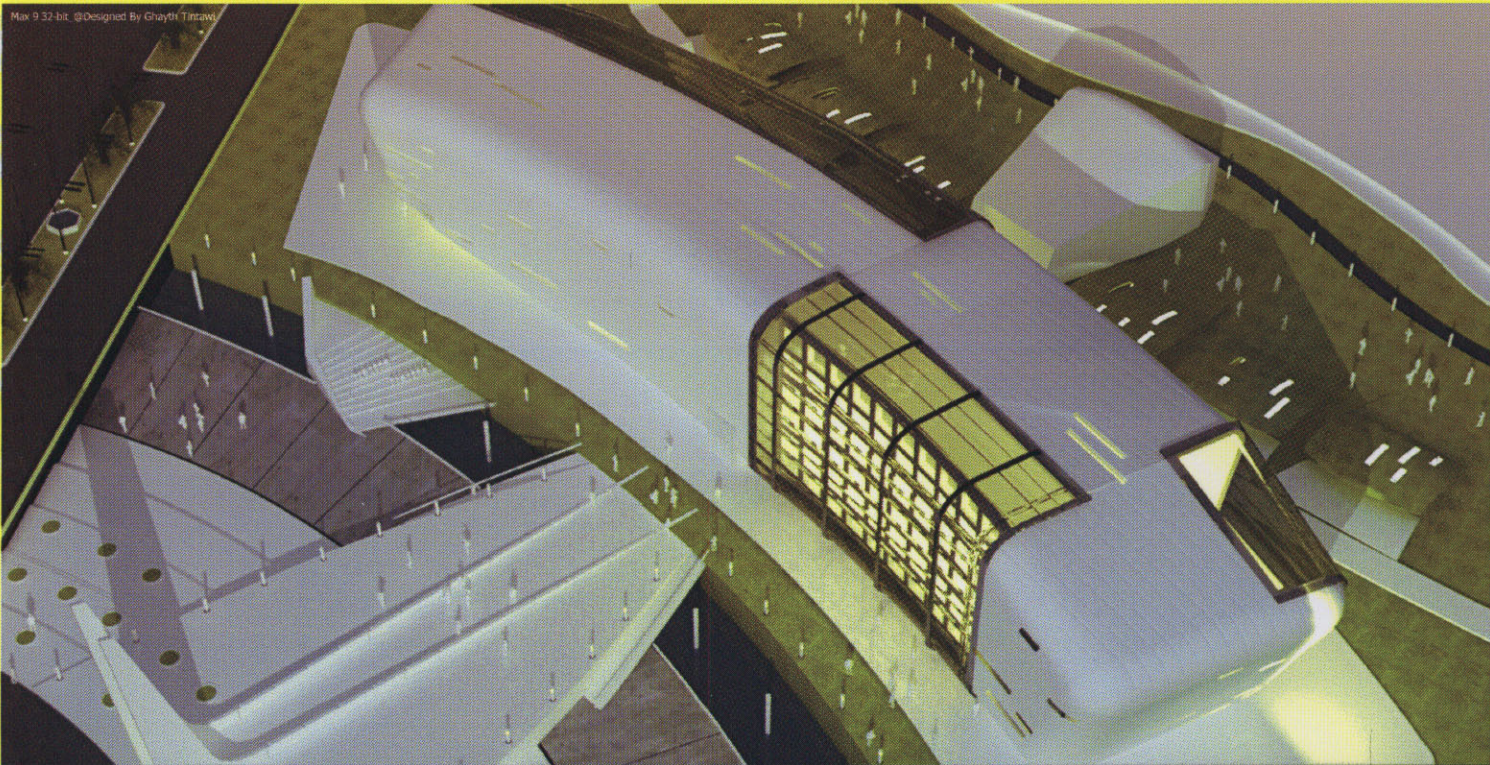
These perspective views present the mass study by its facade and the entrance hall. And its connect with visual axis Start on a distance of 1025 from (Adnan Al Malki) square passing (Teshrin) square.

They present also monument at the end of the axis which contain some (sculptured) of the most famous artist and there works. And it ends with the entrance door (monumentally scale).

We can notice on it both side the auditorium used as social areas holding different shows and there is another auditorium hanging over Barada River.



تظهر هذه اللقطات المنظورية دراسة الكتلة من حيث واجهتها الأمامية وساحة الدخول وارتباطها مع المحور البصري الممتد على مساحة 1025 م من ساحة عدنان المالكي مروراً بساحة , تظهر الرمز التذكاري أيضاً المتوضع على نهاية هذا المحور والذي يحوي على كتابات محفورة لأهم الفنانين السوريين و أعمالهم وينتهي ببياب الدخول المقام بنسبة صريحة , ونلاحظ على جانبيه المدرجات كمناطق اجتماعية للتجمع والعروض المختلفة ومدرج معلق فوق نهر بردى .

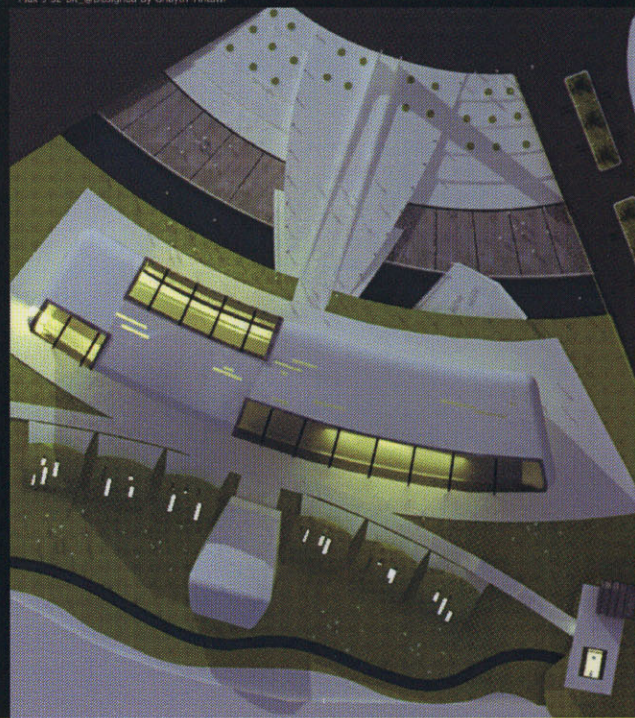


### 3D Views for Architecture & Contemporary Art Center Site Plan and LandScape Study

These perspective views present the mass study by its General Location & The back mass which integrate with the nature.

They also present back axis which connect the end of university axis coming from al- Jamarek square passing the old heritage mill which has been restored to make it as a students exhibitions with the architecture fine arts where the mazza road which subdivided in to the universal city and the rest of the university sections.

تظهر هذه اللقطات المنظورية دراسة الكتلة من حيث الموقع العام والكتلة الخلفية وتداخل الأستديوهات مع الطبيعة وأظهار المحور الخلفي الذي يصل بين نهاية محور الجامعة القادم من ساحة الجمارك مروراً بالطاحونة الأثرية التي أعيد ترميمها لجعلها معرض للطلاب وأيضاً بمركز العمارة والفن المعاصر ومن ثم إلى طريق المزة الذي يتفرع إلى المدينة الجامعية و باقي أقسام الجامعة



Plans ...



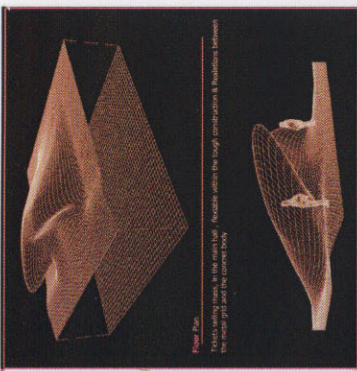


Figure 2: The perforated facade structure, formed with the rough construction & finished between the structure and the inner wall.

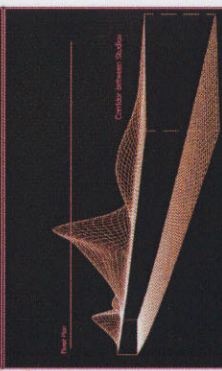


Figure 3: Corridor between buildings.

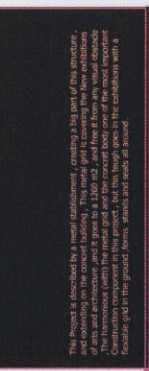


Figure 4: This project is supported by a metal framework, creating a big part of the structure. The structure is made of steel and aluminum, and it goes to 1,100 m<sup>2</sup>. And there are many visual shades of the framework (with) the metal grid and the overall body are of the metal structure. The structure is made of steel and aluminum, and it goes to 1,100 m<sup>2</sup>. And there are many visual shades of the framework (with) the metal grid and the overall body are of the metal structure. The structure is made of steel and aluminum, and it goes to 1,100 m<sup>2</sup>. And there are many visual shades of the framework (with) the metal grid and the overall body are of the metal structure.

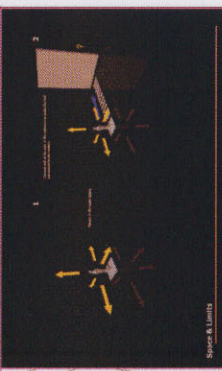


Figure 5: Section & Limits.



Figure 6: Section & Limits.

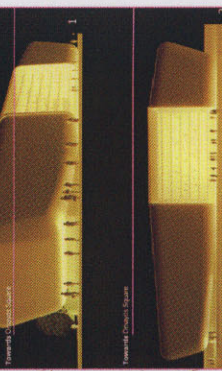
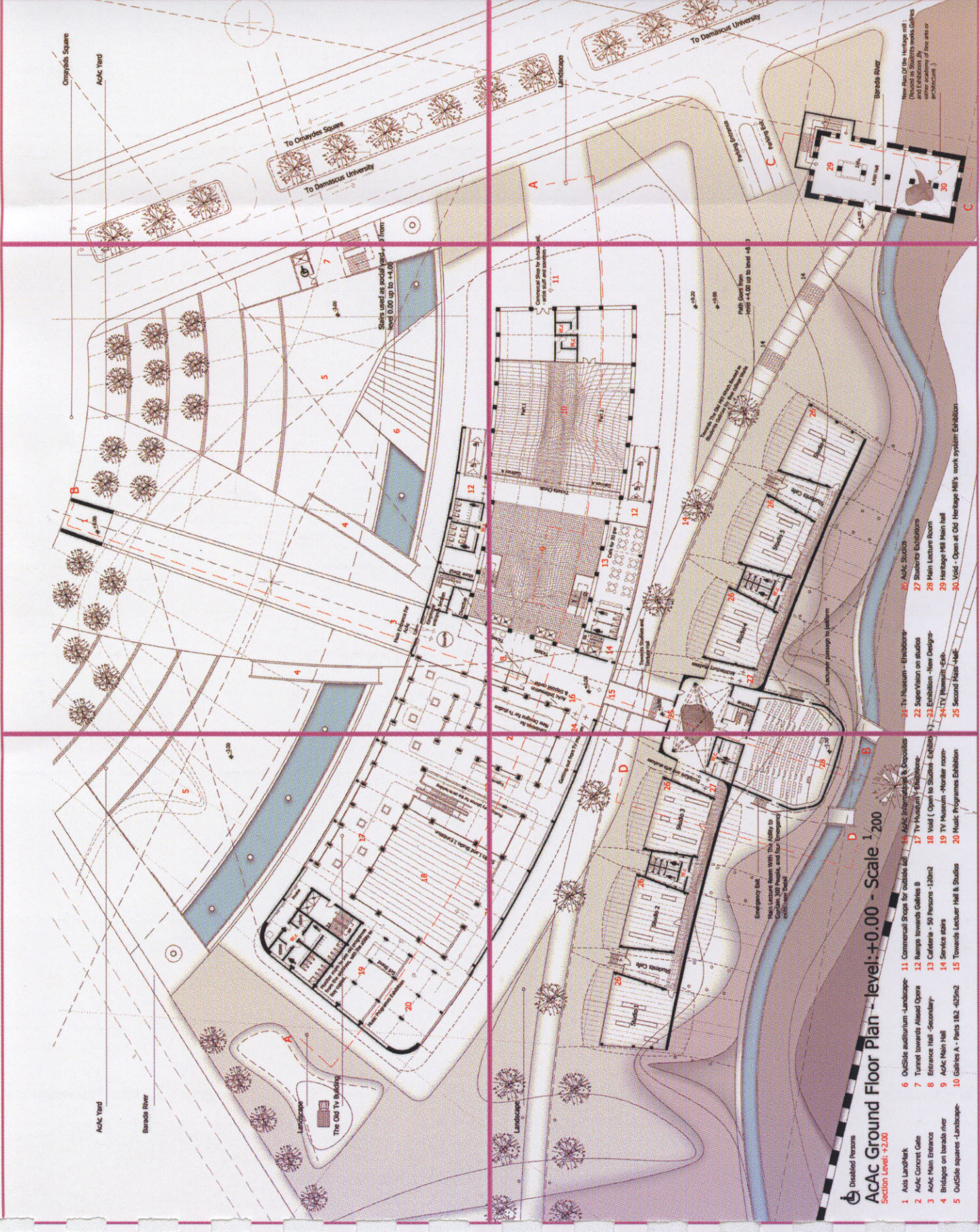
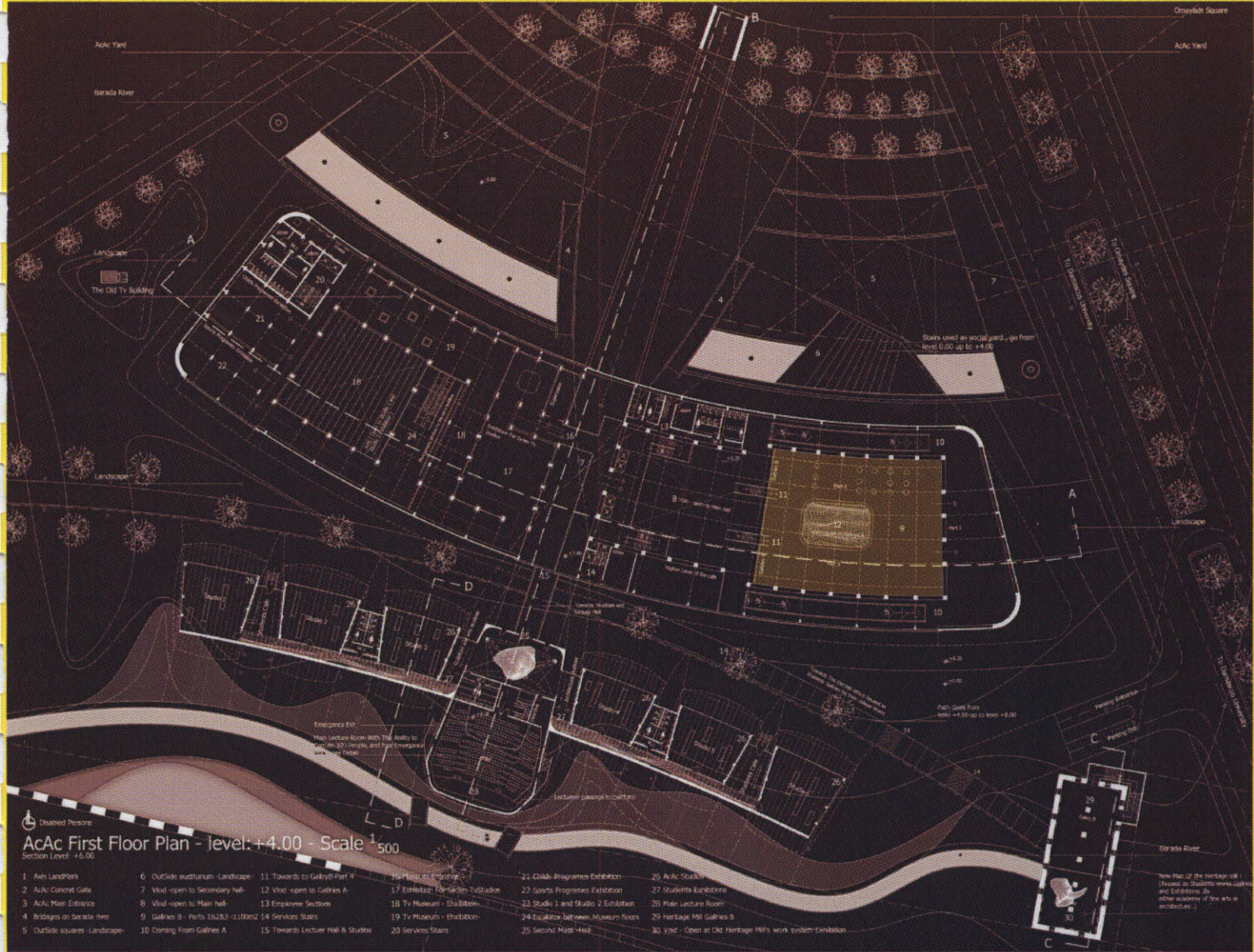


Figure 7: Section & Limits.

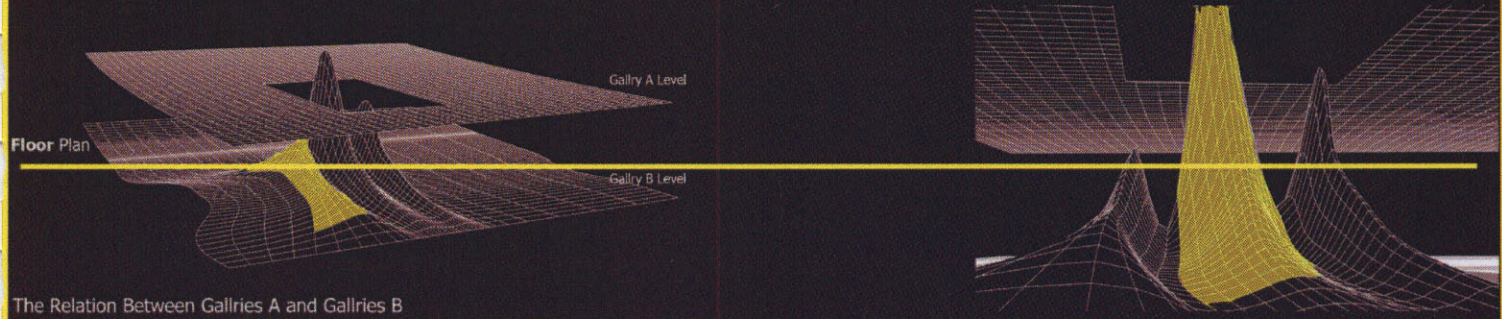


- Disabled Persons
- ### ACAC Ground Floor Plan - level: +0.00 - Scale 1/200
- Section Level: +2.00
- 1 Axis Landmark
  - 2 ACAC Concrete Gate
  - 3 ACAC Main Entrance
  - 4 Bridges on Barada river
  - 5 Outside squares - Landscape
  - 6 Outside auditorium - Landscape
  - 7 Turned towards Almad Open
  - 8 Entrance Hall - Secondary
  - 9 ACAC Main Hall
  - 10 Galleries A - Pairs 182 - 625m<sup>2</sup>
  - 11 Commercial Shop for outside sale
  - 12 Ramps towards Galleries B
  - 13 Cafeteria - 50 Persons - 120m<sup>2</sup>
  - 14 Service stairs
  - 15 Towards Lecturer Hall & Studios
  - 16 ACAC Informative (Deposit)
  - 17 TV - Function / Exhibition
  - 18 Void (Open to Studios - Exhibition)
  - 19 TV Museum - Number room
  - 20 Music Programme Exhibition
  - 21 TV Museum - Exhibition
  - 22 Supervision on studios
  - 23 Exhibition - New Designs
  - 24 TV Museum - Cafe
  - 25 Second Hall - H&E
  - 26 ACAC Studios
  - 27 Boutique Exhibitions
  - 28 Main Lecture Room
  - 29 Heritage Mill Main hall
  - 30 Void - Open at Old Heritage Mill's work system Exhibition



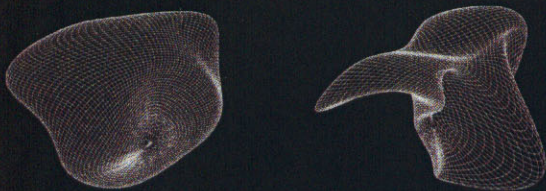
Disabled Persons  
**ACAC First Floor Plan - level: +4.00 - Scale 1/500**  
 Section Level: +6.00

- |                                |  |                                     |                                     |                                      |   |
|--------------------------------|--|-------------------------------------|-------------------------------------|--------------------------------------|---|
| 1. Aisle LandPiers             | 6. Outside auditorium - Landscape      | 11. Towards to Gallery B - Part 4   | 26. Museum Entrance                 | 31. Child - Progression Exhibition   | 35. ACAC Studios  |
| 2. ACAC Concrete Galle         | 7. Wood - open to Secondary hall       | 12. Wood - open to Galleries A      | 17. Entrance: For - main Exhibition | 27. Sports Program Exhibition        | 27. Students Exhibition                                       |
| 3. ACAC Main Entrance          | 8. Wood - open to Main hall            | 13. Employee Sections               | 18. TV Museum - Elis Dittom         | 23. Studio 1 and Studio 2 Exhibition | 28. Main Lecture Room   |
| 4. Bridges on barista river    | 9. Galleries B - Parts 1&2,3 - 11,00m2 | 14. Services Stairs                 | 19. TV Museum - Exhibition          | 24. Escalator between Museum floors  | 29. Heritage Mill Galleries B                                 |
| 5. Outside squares - Landscape | 10. Coming from Galleries A            | 15. Towards Lecturer Hall & Studios | 20. Services Stairs                 | 25. Second Main Hall                 | 30. Void - Open at Old Heritage Mill's work system Exhibition |



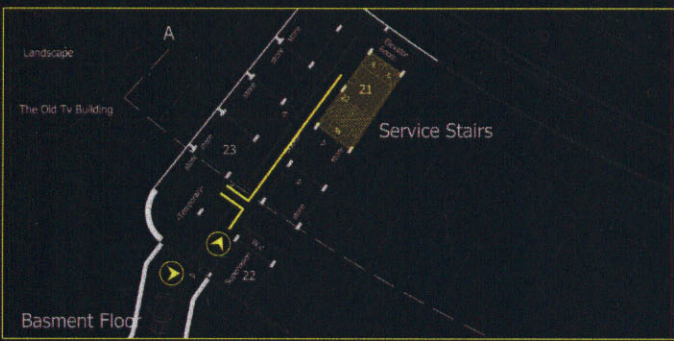
The Relation Between Galleries A and Galleries B

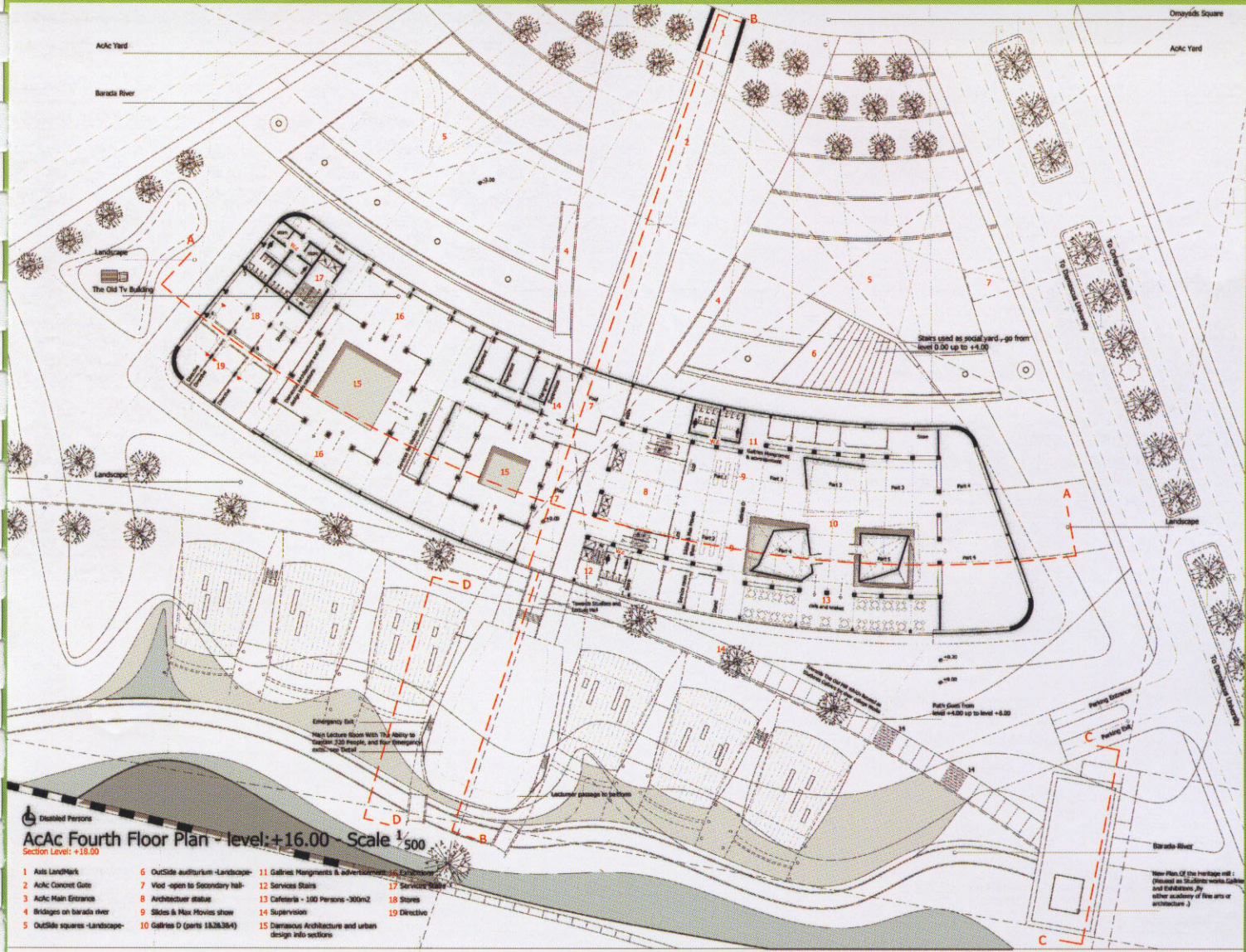




Added Masses In The Old mill and Lecture Hall

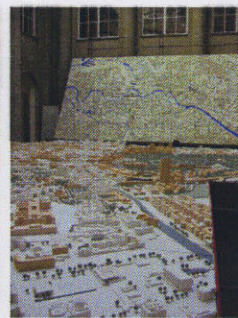
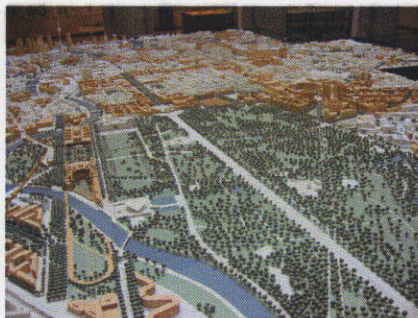
تم إضافة بعض الكتل المفرغة من الداخل وهي عبارة عن قشرة مكنية بمادة التيتانيوم المصقول ووضعت تحت في السقف لإحداث انعكاسات ضوئية في كل من فراغي بيو الكتلة الثانية (بيو قاعة المحاضرات) وبيو الطاحونة الأثرية التي أعيد ترميمها وتوظيفها كمعرض لطلاب العمارة والفنون المتنوعة.





Disabled Persons  
**AcAc Fourth Floor Plan - level: +16.00** Scale 1/500  
 Section Level: +16.00

- |                               |                                   |   |                   |
|-------------------------------|-----------------------------------|---|-------------------|
| 1 Axis LandMark               | 6 Outside auditorium -Landscape-  | 11 Galleries Managements & advertisement                | 16 Exhibition     |
| 2 AcAc Corridor Gate          | 7 Void -open to Secondary hall-   | 12 Services Stairs                                      | 17 Service Stairs |
| 3 AcAc Main Entrances         | 8 Architectural statue            | 13 Cafeteria - 100 Persons -300m2                       | 18 Stores         |
| 4 Bridges on barada river     | 9 Slides & Max Movies show        | 14 Supervision  | 19 Directive      |
| 5 Outside squares -Landscape- | 10 Galleries D (parts 18,28,35&4) | 15 Damascus Architecture and urban design info sections |                   |



توضع هذه الصور المأخوذة في مركز العمارة في مدينة برلين الألمانية ماكيت توضيحي للمدينة واخر تفصيلي. يقدم هذا المركز خدمات للسواح والدارسين والمعماريين حول وضع المدينة على الصعيد التخطيطي والتصميمي وتقدم المساعدات الهامة. كما يعني بوجود بعض التفصيلات لأهم المباني المتواجدة لتقديم المعلومات عنها. وتظهر هذه المراكز الدراسات المستقلة للمدينة وتعرض مشاريع التوسع على الصعيد التخطيطي ويعرض في بعض المراكز مراحل تطور هذه المدن، وتنتشر هذه المراكز في معظم مدن العالم وقدم مركز جديد في قلب مدينة حلب القديمة.

AcAc Yard

AcAc Yard

Barada River

Landscape  
The Golf TV Building

Landscape

Barada River

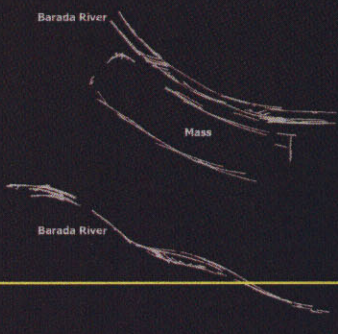
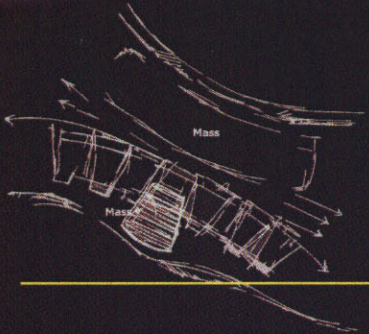
Disabled Persons  
AcAc Fifth Floor Plan - level: +20.00 - Scale 1/500  
Section Level: +22.00

- 1 Axial Link/Block
- 2 AcAc Concrete Gate
- 3 AcAc Main Entrance
- 4 Bridges on Barada river
- 5 Outside squares - Landscape
- 6 Outside auditorium - Landscape
- 7 Void - open to Secondary hall
- 8 Supervision
- 9 General Manager
- 10 Manager Meeting Room
- 11 Offices
- 12 Void - Open at Damascus Architecture and urban design info sections

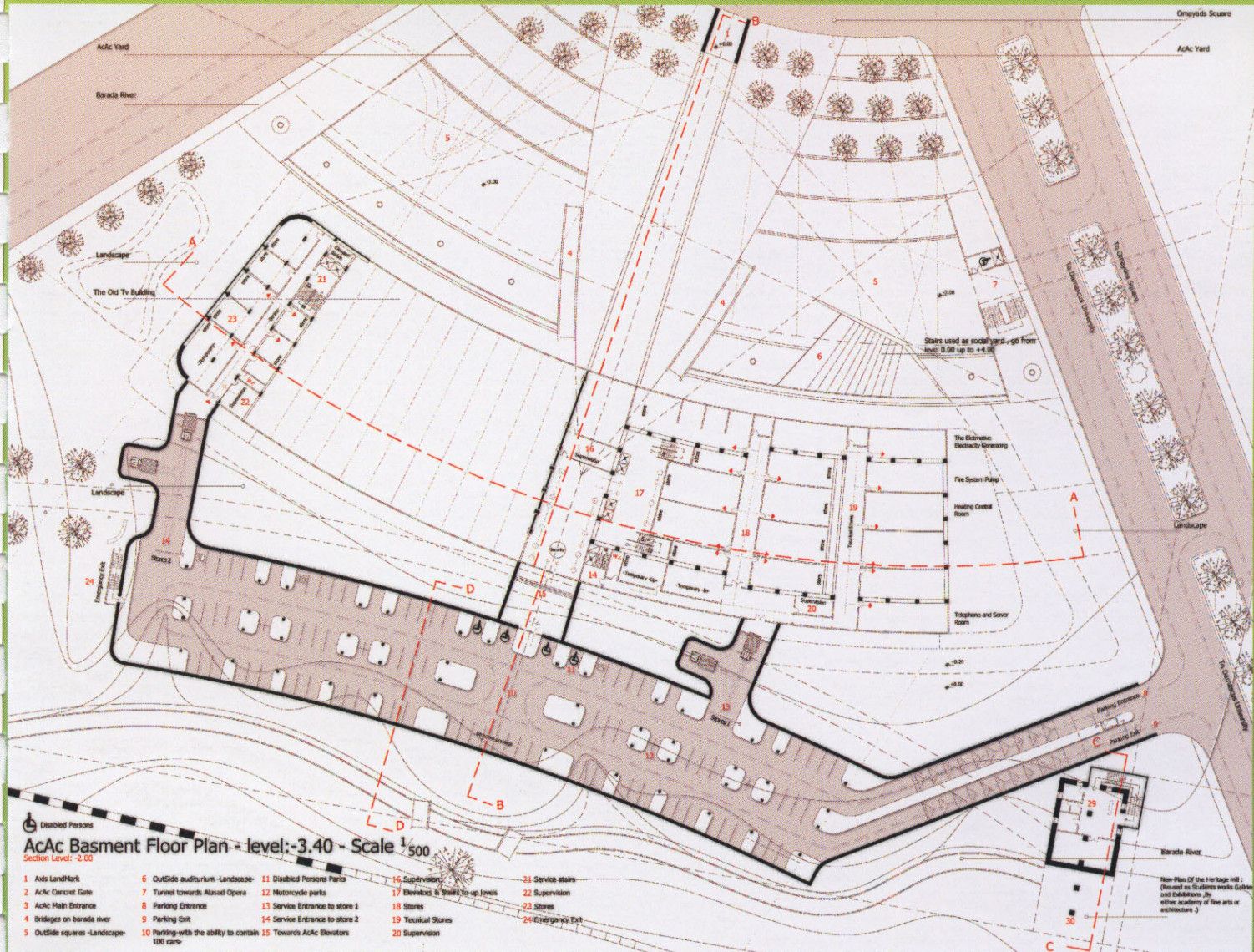
Stairs used as social yard , go from level 0.00 up to +4.00

Plant goes from level +0.00 up to level +8.00

New Part Of the heritage Mill  
Theater is located here. Getting into Damascus by either academy of fine arts or architecture



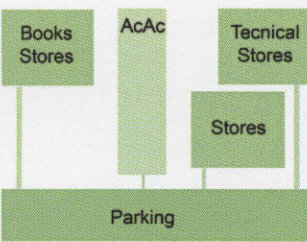
تلاحظ تأثير شكل النهر على تصميم الكتلة حيث نرى امتداد مائل مع ميول النهر لكتلة الإذاعة و التلفزيون و امتداد لكتلة المحاضرات ضمن الفراغ الذي يشكله فرع النهر في الجهة الخلفية واتصالها أيضا مع كتلة الاستديوهات التي تشكل امتداد للطبيعة من حولها



Disabled Persons  
**AcAc Basment Floor Plan - level: -3.40 - Scale 1/500**  
 Section Level: -2.00

- |                               |   |                                |                                   |                   |
|-------------------------------|---|--------------------------------|-----------------------------------|-------------------|
| 1 Axis LandMark               | 6 Outside auditorium -Landscape-                | 11 Disabled Persons Paria      | 16 Supervisor                     | 21 Service stairs |
| 2 AcAc Concert Gate           | 7 Tunnel towards Alasca Opera                   | 12 Motorcycle parks            | 17 Elevator & stairs to up levels | 22 Supervision    |
| 3 AcAc Main Entrance          | 8 Parking Entrance                              | 13 Service Entrance to store 1 | 18 Stores                         | 23 Stores         |
| 4 Bridges on borada river     | 9 Parking Exit                                  | 14 Service Entrance to store 2 | 19 Technical Stores               | 24 Emergency Exit |
| 5 Outside squares -Landscape- | 10 Parking-with the ability to contain 100 cars | 15 Towards AcAc Elevators      | 20 Supervision                    |                   |

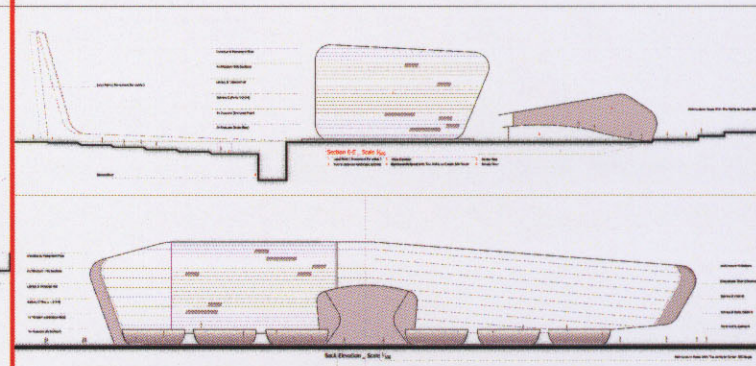
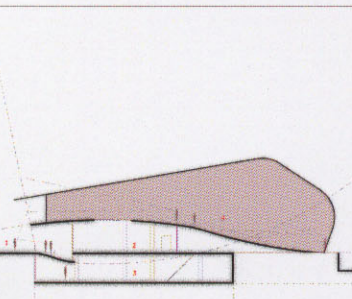
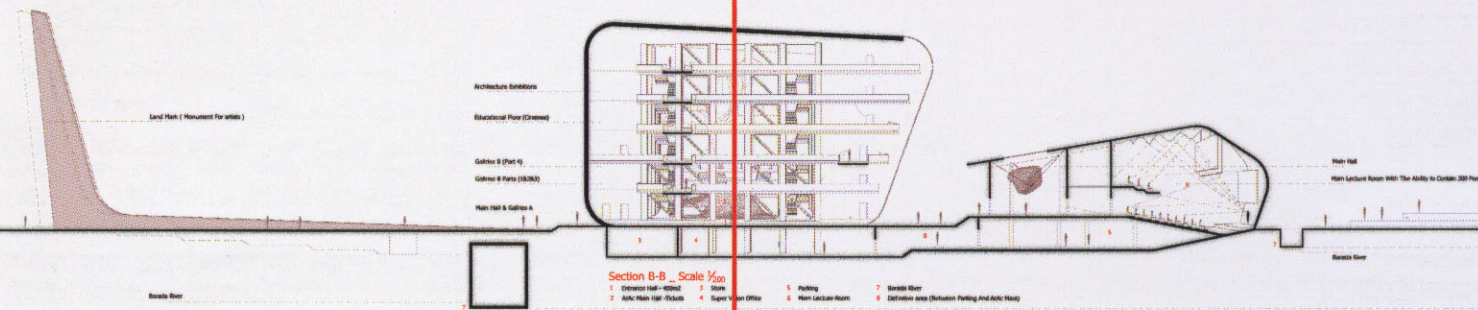
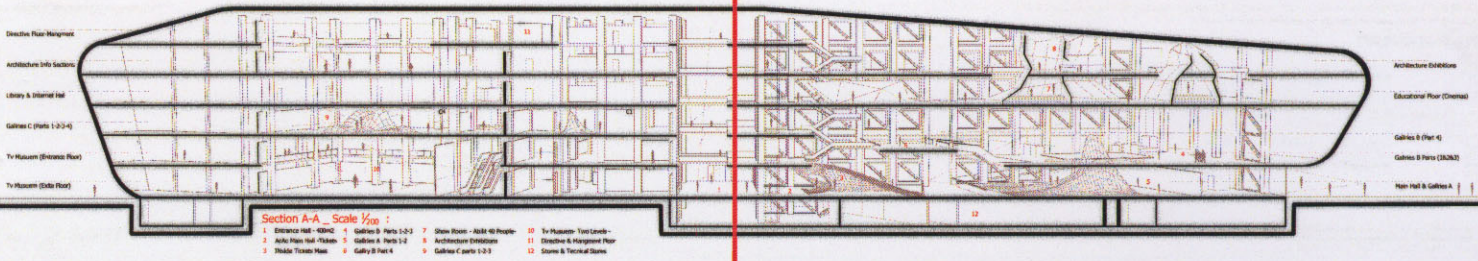
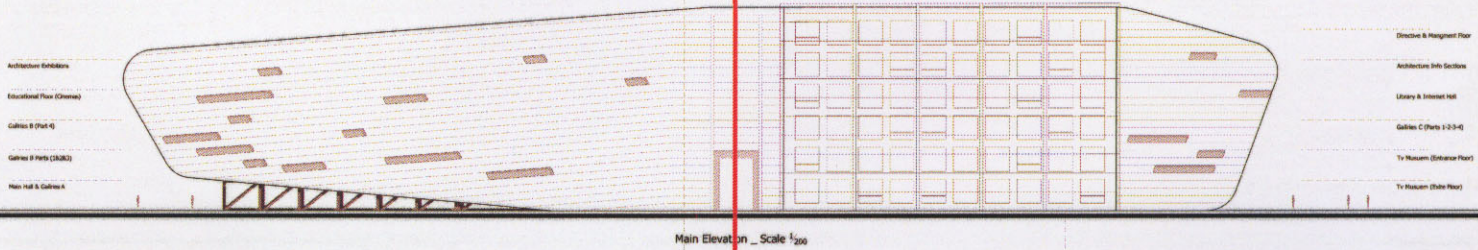
New Plan of the Heritage Mill (Revised as Scullens works Gallery and Exhibition, by other academy of fine arts or architecture)

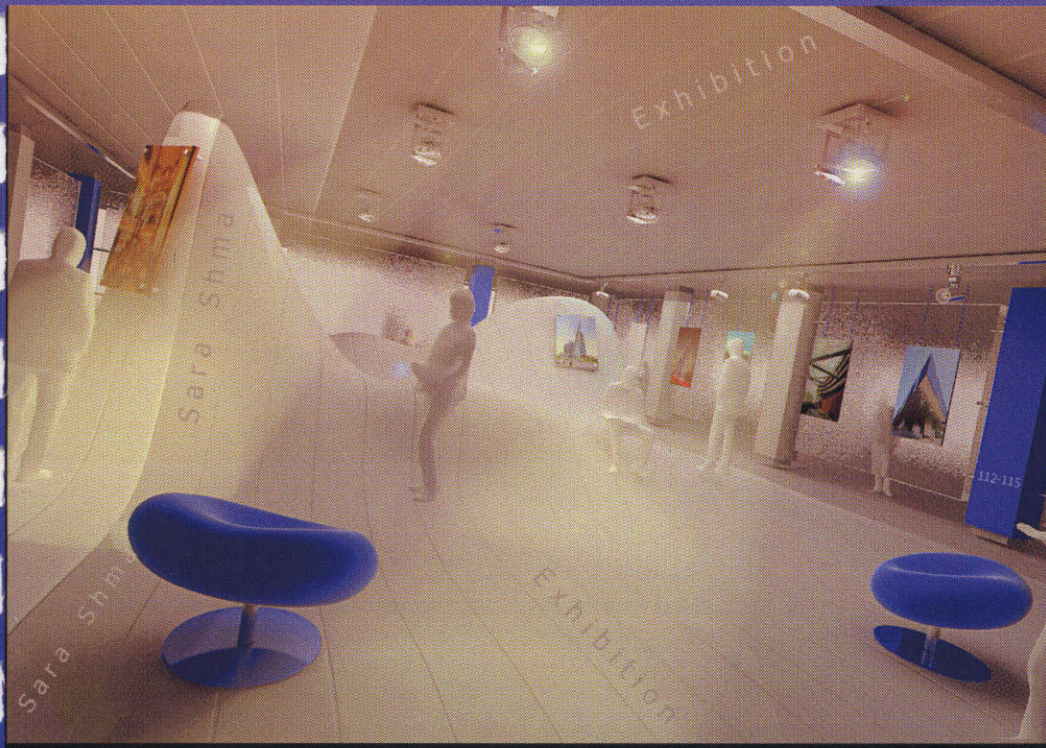


يظهر هذا المسقط مواقف السيارات في القبو حيث يتوزع 100 موقف للسيارات و4 مواقف لسيارات المعاقين- تتميز بموقعها بالقرب من باب الدخول- و 16 موقف للدرجات النارية و8 مواقف خاصة للإدارة .  
 تقع في هذا المسقط أيضا مستودعات تقنية ومستودعات للكتب والمعرضات مع طرق خاصة للتخديم  
 تفصل المستودعات التقنية عن المستودعات الأخرى بجدار مزدوج يفصل بين طرفيه 1م في حال حدوث أي حوادث أو طوارئ  
 يلاحظ أيضا مستودعات في الطاحونة القديمة للتخديم والتي أعيد ترميمها وتوظيفها كمعرض لطلاب العمارة و الفنون الجميلة

# Sections









These perspective views present the interior space for the C Galleries (4 Parts) In the Second Floor of the Mass. We can also recognize the harmoniously (Between) the metal grid and the concret body is forming one of the most important Construction component in this project , but this tough goes in the exhibitions with a flexible grid in the ground ,forms stands and seats all around.



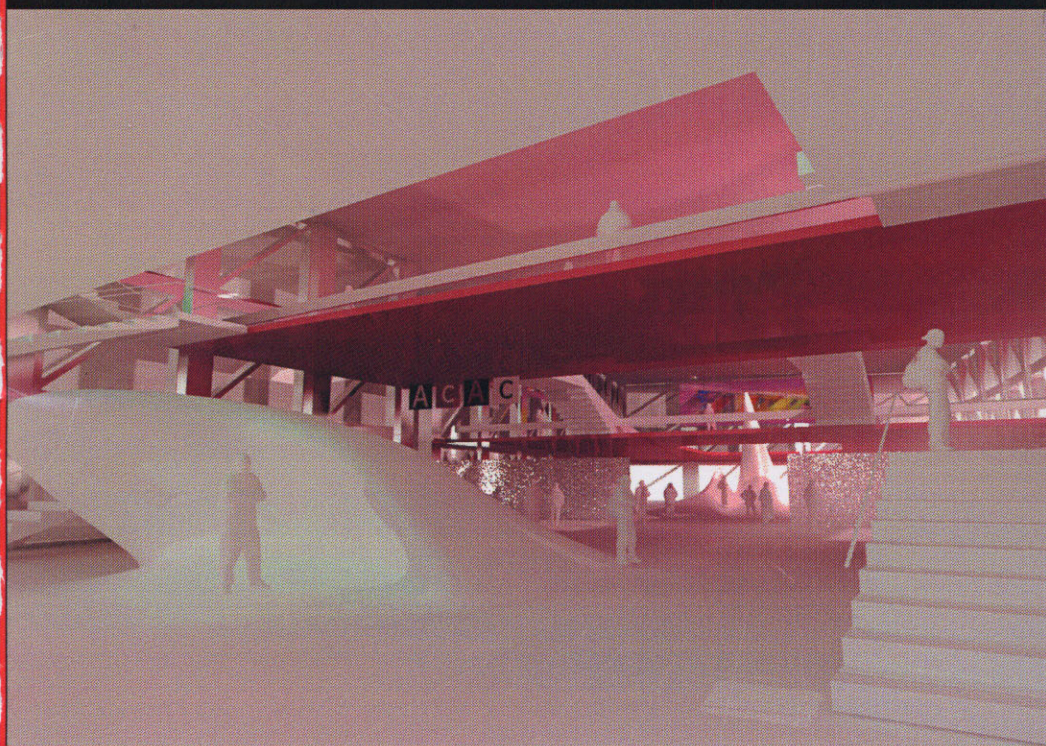
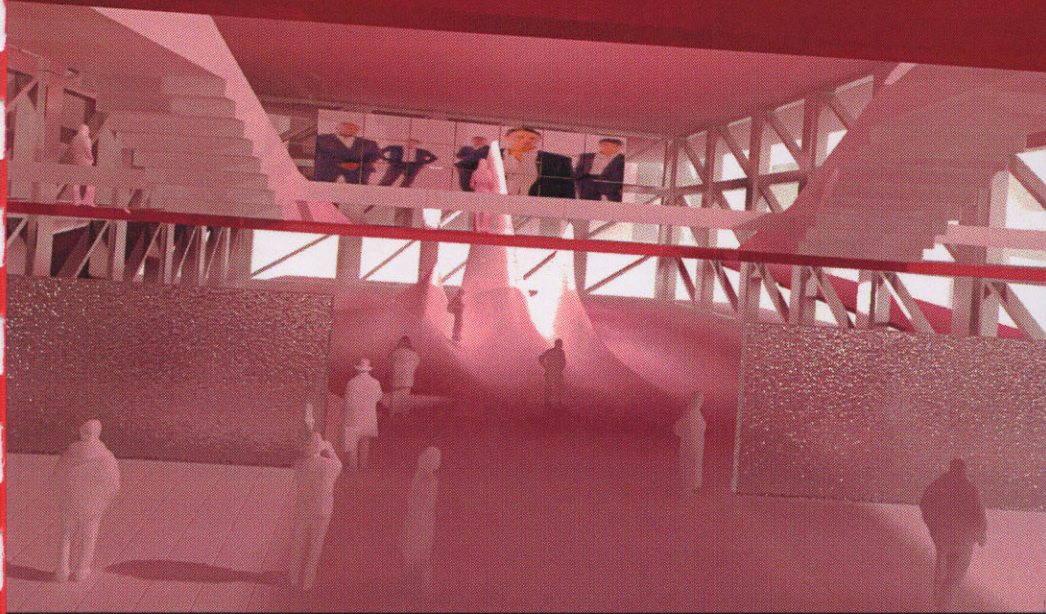
Also we can see the several levels of galleries (A and B in the expanded mass and C in the Old Tv Building ) which had been designed in a continues movement line, to make the tour more interesting

-  Galleries C -Part 4
-  The View Location






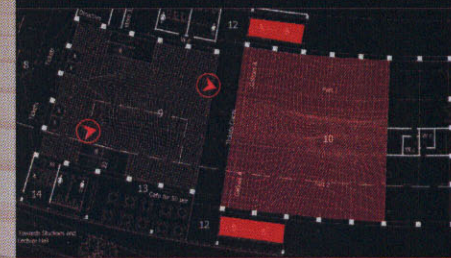
تظهر هذه اللقطات المنظورية الفراغ الداخلي للكثلة المضافة الى جوار كتلة الإذاعة ، نلاحظ الإنشاء المعدني الذي يغطي فراغ واسع متحرر من الأعمدة لتقديم المعارض المختلفة و نلاحظ أيضا المناسيب المختلفة والذي رعي في تصميمها أن تكون شبه مكشوفة للزوار للدفع ( بهم الى زيارتها )الفضول والفضول العلمي



These perspective views present the interior space for the added mass besides the TV building which had restored (ACAC). We can also recognize the metal construction which gives free columns space.

Also we can see the several levels which can be seen from many points, to encourage the visitors to enter.

-  Galleries A
-  Towards Galleries B&C
-  The View Location



Have a nice Days ...  
2007 Graduation

